

2012 EXISTING LAND USE

EXISTING LAND USE OVERVIEW

TOTAL AREA OF MISSISSAUGA
(HECTARES/ACRES)

29,210 ha
72,180 acres

PERCENTAGE OF LAND IN
DOWNTOWN MISSISSAUGA
COMPRISING APARTMENTS

20.1%

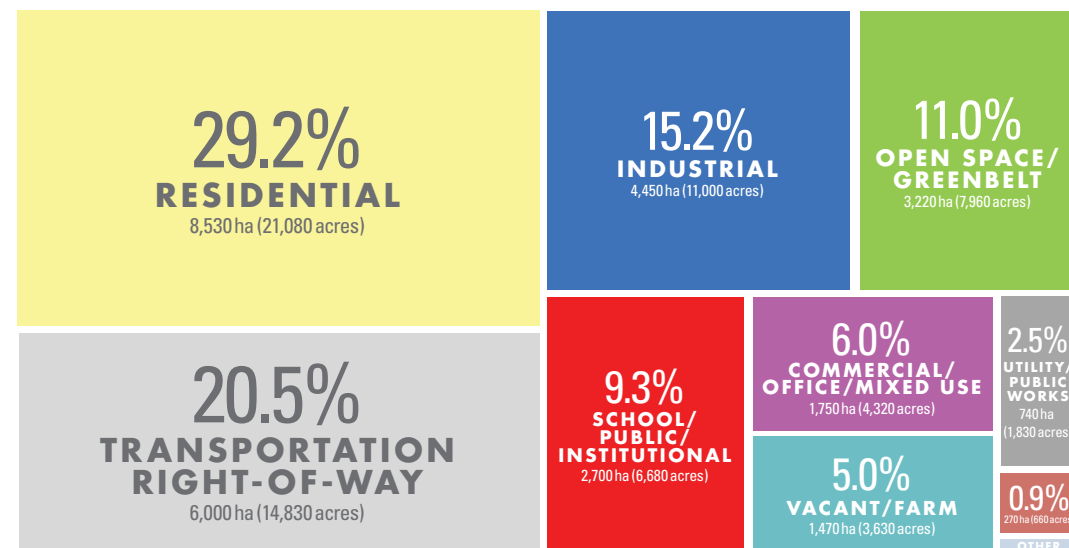
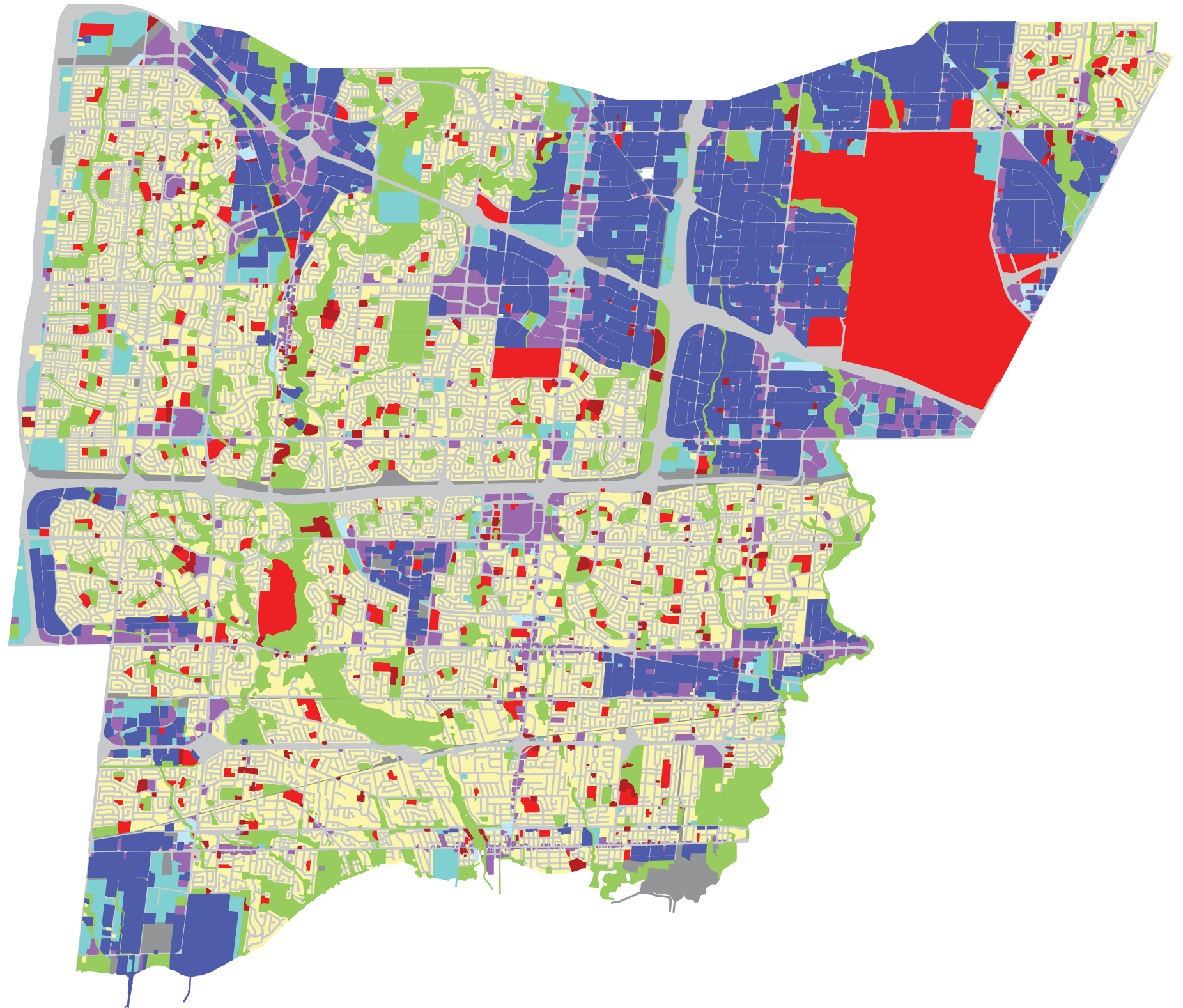
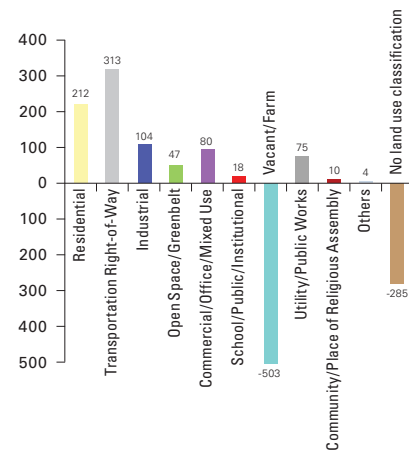
PERCENTAGE OF LAND
COMPRISING DETACHED
HOMES IN NEIGHBOURHOODS

36.5%

PERCENTAGE OF OFFICE
LAND LOCATED IN
CORPORATE CENTRES

64.6%

EXISTING LAND USE CHANGE IN HECTARES (2006-2012)



Read more about the 2012 existing land use and view this map as a KML at mississauga.ca/data