

2013 EXISTING LAND USE

EXISTING LAND USE OVERVIEW

TOTAL AREA OF MISSISSAUGA
(HECTARES/ACRES)

29,214 ha
72,188 acres

PERCENTAGE OF LAND IN
DOWNTOWN MISSISSAUGA
COMPRISING APARTMENTS

20.1%

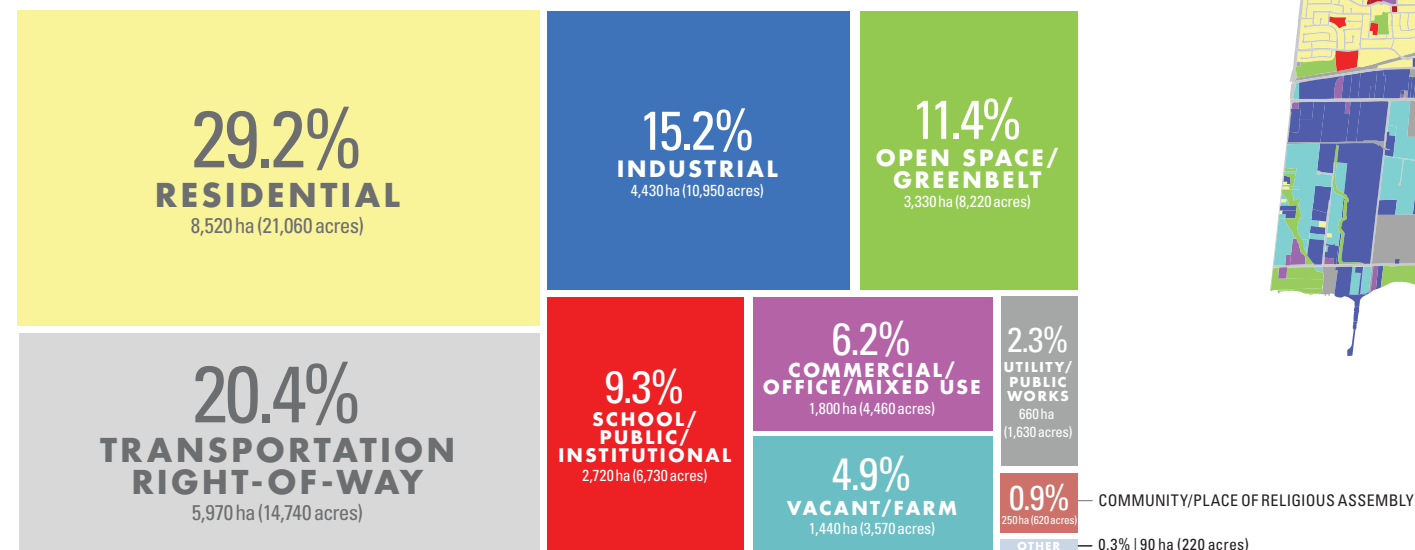
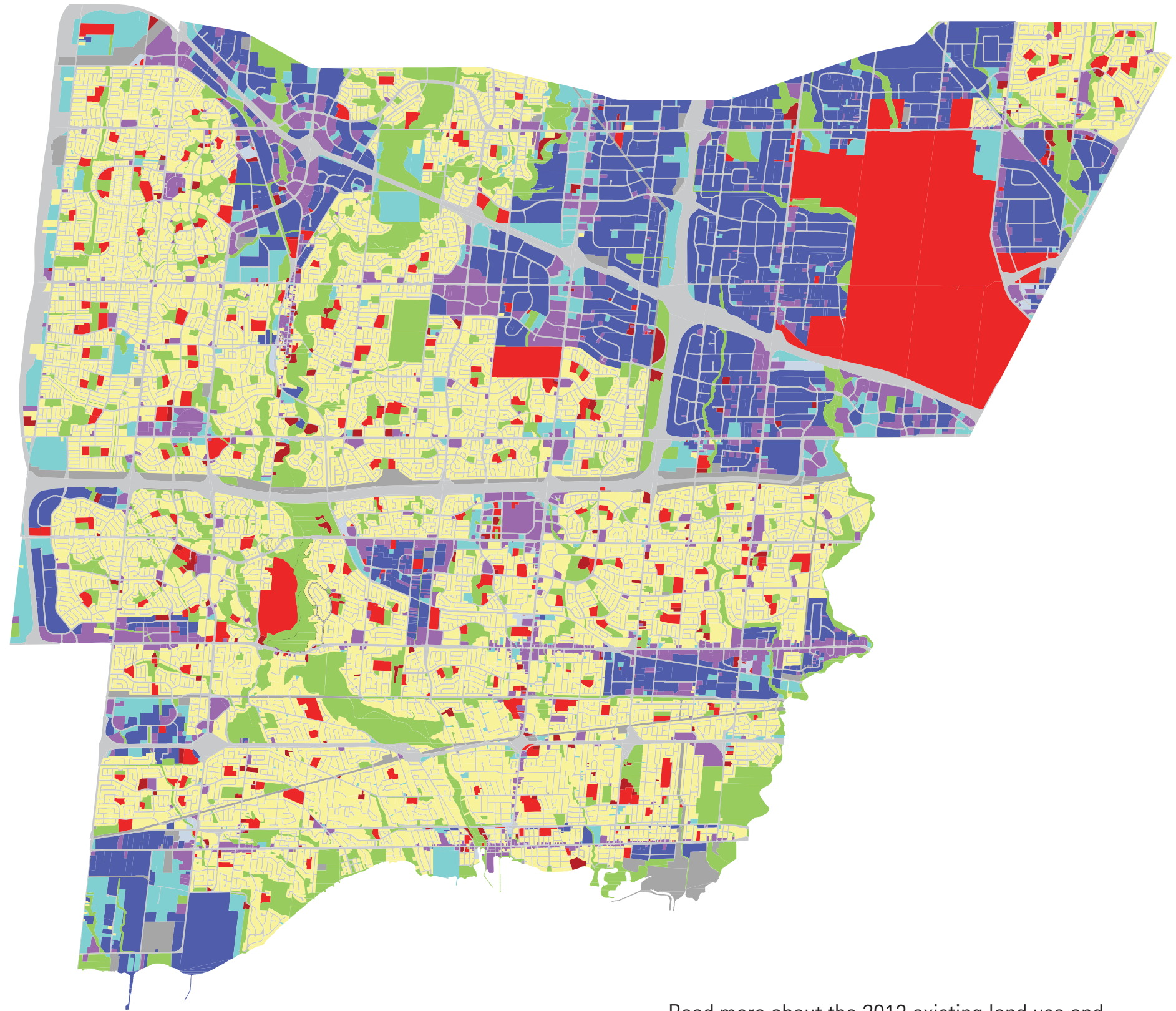
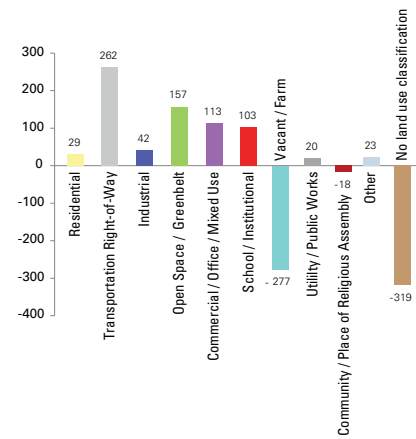
PERCENTAGE OF LAND
COMPRISING DETACHED
HOMES IN NEIGHBOURHOODS

36.5%

PERCENTAGE OF OFFICE
LAND LOCATED IN
CORPORATE CENTRES

65.0%

EXISTING LAND USE CHANGE IN HECTARES (2007-2013)



Read more about the 2013 existing land use and view this map as a KML at mississauga.ca/data