

2012 EMPLOYMENT PROFILE

EMPLOYMENT

OVERALL WORKERS EMPLOYED WITHIN MISSISSAUGA**

▼ 0.8%

415,710

TOTAL EMPLOYMENT** + CENSUS ADJUSTMENT

386,125 + 29,585

FULL TIME EMPLOYMENT VS. PART TIME**

91% FULL TIME, 9% PART TIME

EMPLOYEES THAT WORK FROM HOME**

0.8% BASED ON 26% SAMPLE SIZE

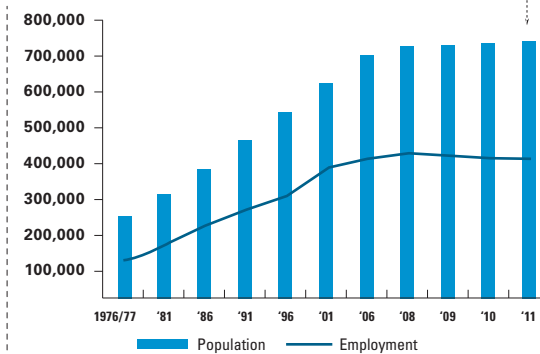
2011 TOTAL FORECASTED POPULATION

738,000 ▲ 0.5%

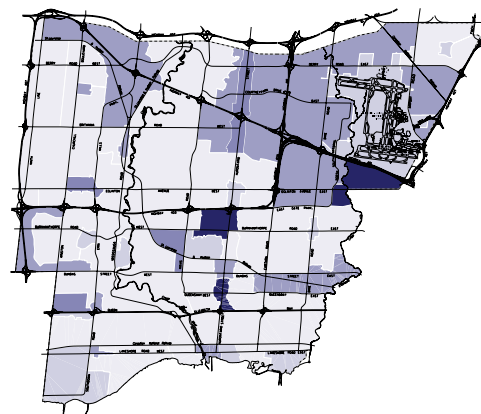
2011 EMPLOYMENT RATIO**

0.56

WORKERS EMPLOYED AS A PROPORTION OF TOTAL POPULATION 1976-2011**



GROSS EMPLOYMENT DENSITY IN MISSISSAUGA**



BUSINESSES

TOTAL NUMBER OF BUSINESSES IN MISSISSAUGA*

▲ 0.7%

54,056

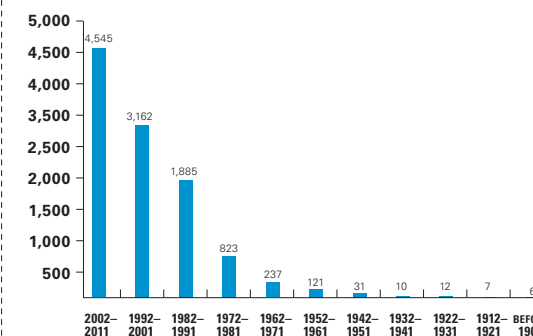
NUMBER OF BUSINESSES OPERATING ON BUSINESS SITES** + HOME-BASED BUSINESSES*

21,010 + 33,046

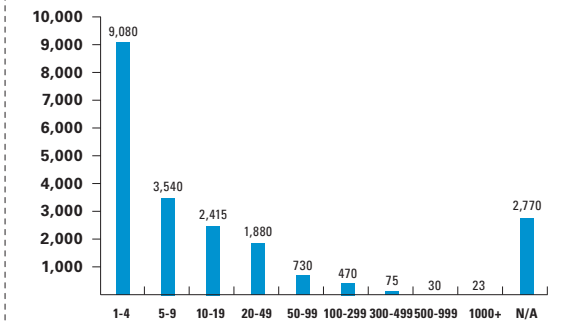
NUMBER OF BUSINESSES BY BUSINESS CLASSIFICATION FOR TOP 10 SECTORS**

- 2,712 RETAIL TRADE ▼0.8%
- 2,566 WHOLESALE TRADE ▼2.6%
- 2,417 MANUFACTURING ▼4.0%
- 2,097 OTHER SERVICES 0%
- 1,506 PROFESSIONAL + TECHNICAL SERVICES ▼1.0%
- 1,482 ACCOMMODATION + FOOD SERVICES ▲0.5%
- 1,463 HEALTH CARE + SOCIAL ASSISTANCE ▲1.3%
- 891 TRANSPORTATION + WAREHOUSING ▼5.8%
- 750 FINANCE + INSURANCE ▼3.1%
- 660 EDUCATIONAL SERVICES ▼1.0%

NUMBER OF BUSINESSES BY AGE BASED ON 52% RESPONSE**



NUMBER OF BUSINESSES BY SIZE OF BUSINESS**



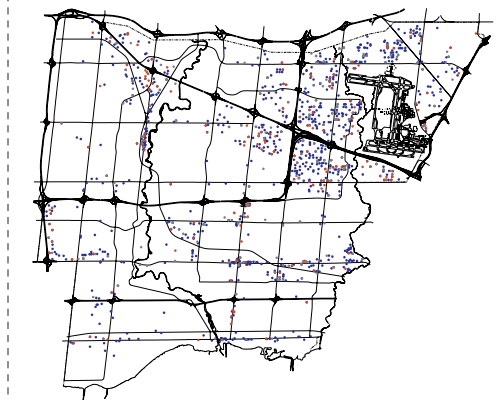
VACANCIES**

3,290 ▲ 6.8%

NEW BUSINESSES OR BUSINESSES THAT MOVED BETWEEN 2010 AND 2011**

2,215

BUSINESS MOVES MAP**



- Business Movement**
- Business Change
 - Business Moved In
 - Business Moved Out

Download full size maps and read more about this at mississauga.ca/data

*Source: Statistics Canada, Canadian Business Patterns (CBP) Database, June 2011

**Source: Mississauga Employment Database, 2011

Comparisons are based on the previous Annual Employment Survey